



Welcome meeting  
**St PETER'S  
SCHOOL**

School Year 22-23  
Year 6 - Mr. Mauri

# Homeroom teacher Y6 Mr Marui



Joan Mauri

Email: [jmauri@stpeters.es](mailto:jmauri@stpeters.es)

# Content

- Timetable
- Homework
- Reminders
- Excursion
- MYP

Year 6 Man		MONDAY	TUESDAY	WEDNESDAY	THURSDAY	FRIDAY
1	8:15 – 09:30	Science - Miss Maragos	Catalan - Mr Alcobé, Miss Rut or Miss Llorca	Maths - Miss Vosper	Catalan - Mr Alcobé, Miss Rut or Miss Llorca	Maths - Miss Vosper
2	09:30 – 10:30	Robotics - Mr Mauri	Maths - Miss Vosper	Science - Miss Maragos	Spanish - Miss Patricia, Miss Begonya and Miss Susana	Tutorial - Mr. Mauri
3	10:30 – 11:00	Break				
4	11:00 – 12:00	Spanish - Miss Patricia, Miss Begonya and Miss Susana	Exponential - Miss Maragos	English - Miss Janet	French - Mr Miranda	English - Miss Janet
5	12:00 – 13:00	Music - Mr. Sam	Science - Miss Maragos	Spanish - Miss Patricia, Miss Begonya and Miss Susana	English - Miss Janet	Global Perspectives - Miss Roisin
6	13:00 - 14:00	Break				
7	14:00 – 15:00	French - Mr Miranda	Spanish - Miss Patricia, Miss Begonya and Miss Susana	Global Perspectives - Miss Roisin	Science - Miss Maragos	PE - Miss Chantal
8	15:00 -16:00	Maths - Miss Vosper	English - Miss Janet	Music - Mr. Sam	Robotics - Mauri	

# Homework

Students expected to be more independent in MYP and able to manage any homework assignments.

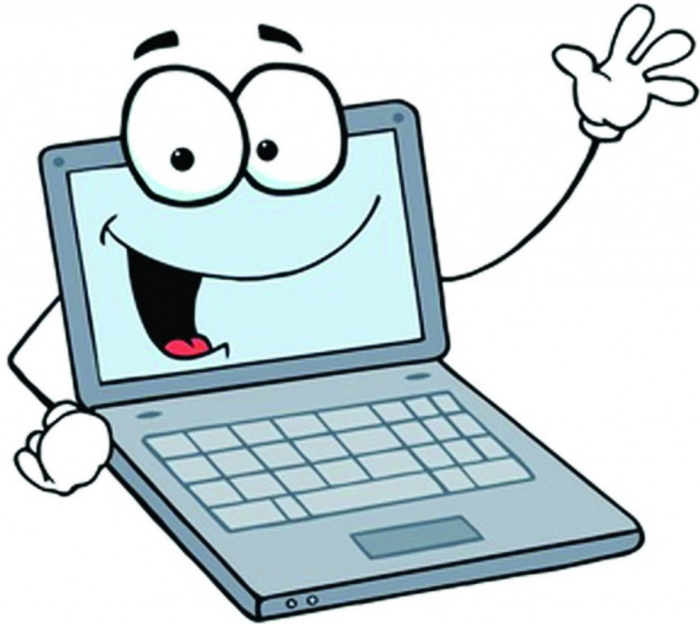
Homework recorded on Google Classroom.

A student might not always have homework.

MYP places emphasis on balanced lifestyle = clubs, activities, family time.

**Students should be reading and reviewing class work regularly.**

# CHARGED Computer



Students need to  
bring a laptop to  
school every day.

## Mobile phones

Students are permitted to bring mobiles to class but are prohibited from using them during school hours (08:15 - 16:00).

If you need to contact your child urgently, please contact reception.



# Locker



Students need to  
bring in padlocks for  
their lockers

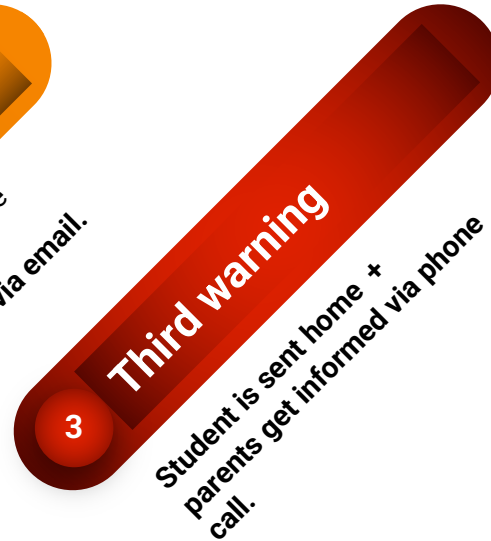
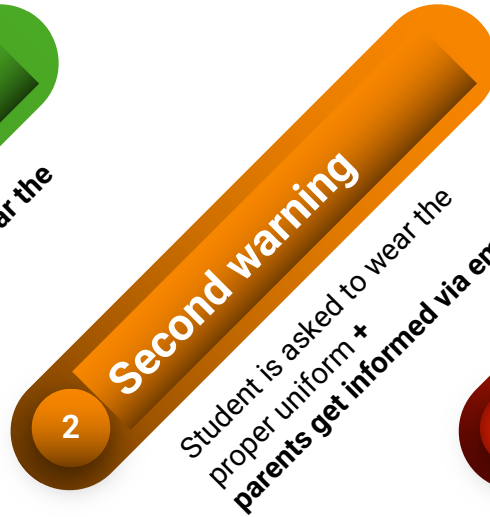


Please ensure that students bring a refillable water bottle to school



# UNIFORMS

Students **MUST** wear their uniform correctly, including the PE uniform.



# 1 Summer uniform

---



Long grey trousers  
Male/Female model



Red Polo T-Shirt



Black shoes  
Or black trainers



Grey socks

## 2 Winter Uniform



Blue shirt



Male jumper



Feminine Perkins



Black Jacket



Tie (optional)



Sweatshirt

## 2 Winter Summer



Long grey trousers  
Male/Female model



Black shoes  
Or black trainers



Grey socks

## 5.3 PE uniform



Red Sports T-shirt



Sports Shorts/leggings



Sports Tracksuit pants  
Long leggings



Sports bag



Trainers

# Uniform instructions

- PE uniform will be used only for the PE hours
- Students will have to shower after PE. Therefore, they will need a PE bag with the required uniforms to wear after the class, and the necessary shower items
- It is compulsory to have a Lab coat
- The after school equipment is for after school activities, not to wear them during school hours.
- If you have any issues with a uniform item, please contact the school

## Going home alone

Students in Year 6 need permission to go home alone. Please ensure you complete the form asap.



# Excursion- Year 6

La Molina- Second week in May 2023 (TBC)



Primary Programme:  
Year 1 to 5

Middle Years Programme:  
Year 6 to 10

# DIFFERENCES BETWEEN Y5 AND Y6

- Gain autonomy.
- Students are encouraged to be independent learners.
- Students are trained to be more aware of their responsibilities.
- Students will have specialists for each subject.
- New subjects: Exponential Science, Global Perspectives, Interdisciplinary Project

# MYP Grading

Each subject has 4 criterion (8 marks each) 32

Language and Literature (English and Spanish)

Criterion A

Analysing

Criterion B

Organising

Criterion C

Producing  
Text

Criterion D

Using  
Language

# Assessments

**Formative Assessment** = Work which is marked by the teacher during the unit. This marking will help the teacher and the student know what they need to do to improve. The student will not necessarily receive a grade for this work.

**Summative Assessment** = Final piece of work at the end of the unit. Student will receive a grade for one or more of the criteria.

# MYP Grading

Criterion A - Analysing	5
Criterion B - Organising	6
Criterion C - Producing text	5
Criterion D - Using Language	4
<b>Total</b>	<b>20 = Grade 6</b>

The MYP assessment scale compared with the national system is shown below:

MYP Marks	1	2	3	4	5	6	7
MYP Boundaries	0-5	6-9	10-14	15-18	19-23	24-27	28-32
National System	1-2	3	4	5-6	7	8	9-10

Although the idea of passing and failing does not have a place in the MYP framework due to its assessment philosophy, we still need to fulfill the requirements of the Spanish National Education System and therefore we will qualify as passing the MYP mark of 4

# Parent meetings

At least one meeting per year, usually before Christmas.  
You will be contacted by the reception to organise this.

## Contact

Mr Mauri

[jmauri@stpeters.es](mailto:jmauri@stpeters.es)



**St PETER'S  
SCHOOL**

A step beyond